

BW-CAM-IP2MP21B**2 MP FULL HD Network Camera Installation Guide****1. Introduction**

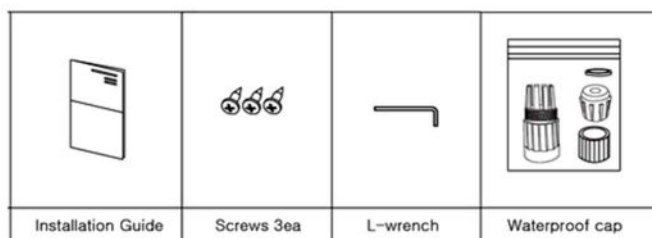
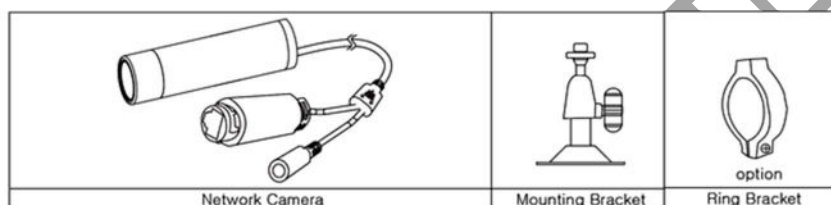
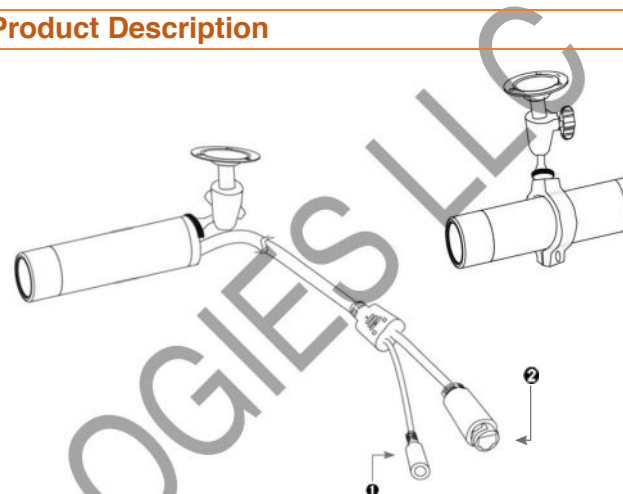
IP Mini Bullet Camera Installation Guide

This installation guide provides instructions for installing the network camera on your network. For all other aspects of using the product, please see the User's Manual.

Installation Steps

1. Check the package contents compared to 'Package Contents'
2. Read the 'Product Description'
3. Install the hardware
4. Set an IP address
5. Set the admin and user ID and password (see User's Manual)

Important! This product must be used in compliance with local laws and regulations.

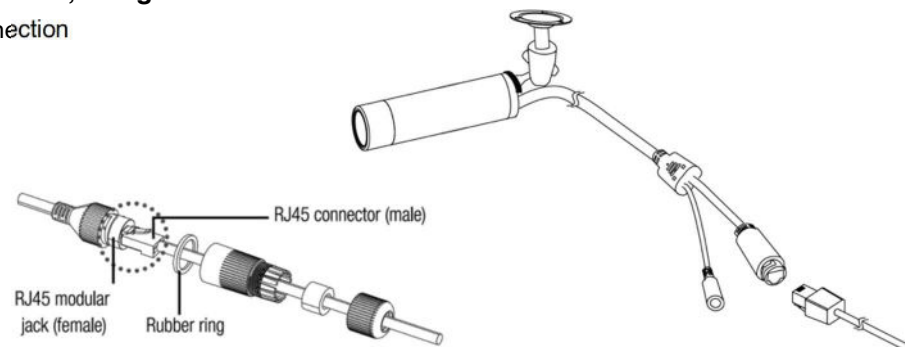
2. Package Contents**3. Product Description**

1. Power Input (DC12V) – Connects to DC 12V power
2. Network Connector – The network camera connects to the network via a standard network cable and automatically detects the speed of the local network segment (10BaseT/100BaseTX Ethernet). PoE Supported.
3. Ingress Rating: IP 66

4. Hardware Installation

IP camera, designed for installation as shown below.

Connection



1. Connect the camera to the network using a UTP cable (CAT.5). Power can be supplied via the network cable (PoE).
2. Connect DC 12V to the power terminal. This is not necessary if the network camera is connected to a PoE hub or midspan.
3. Check that the indicator LEDs indicates the correct conditions.
4. Connect the RJ45 modular jack (female) to the RJ45 connector (male).

5. IP Address Assignment

Camera must be assigned an IP address to make it accessible on the network.

NOTE:

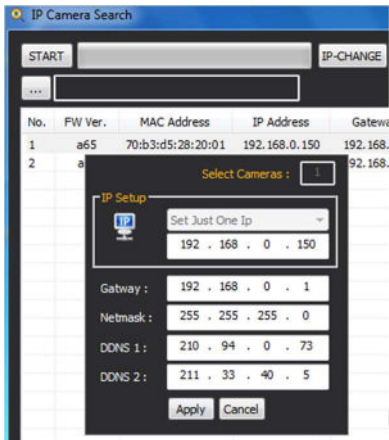
- A network DHCP server is optional
 - The network camera has the default IP address 192.168.2.2
 - If IP assignment fails, check if the firewall is blocking the operation. Ensure the network camera and computer IP are located on the same subnet.
- Assign an IP address using IP Installer

The IP installer automatically searches for & displays network devices on IP Cam Search. The application can also be used to manually assign a static IP address.

NOTE:

The computer running the IP Cam Search must be on the same network segment (physical subnet) as the network camera.

1. Check the network camera is connected to the network and power has been supplied.
2. Run the IP CamSearch program.
 - Click the START button to scan and find the network camera.
 - IP Settings
 - The factory default IP address is searched 192.168.0.150
 - User can change the address and network information if desired.
3. Click the "Apply" button to save the configuration.

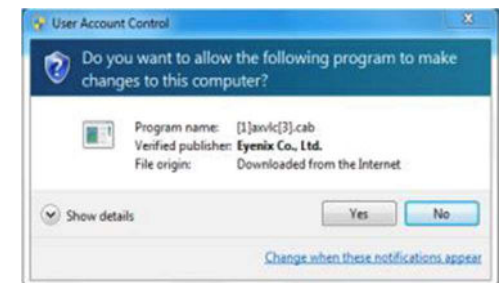
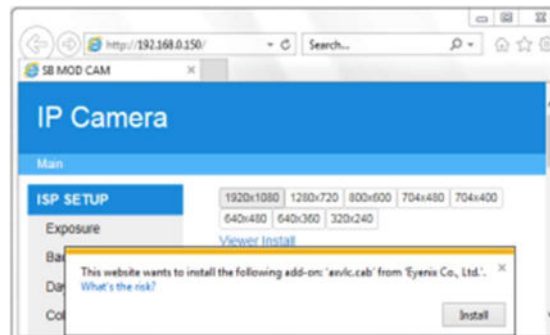


Administrator on Windows Vista, 7, 8, 10 (supported only in the Desktop mode).
Users without administrator rights cannot install ActiveX controls. Unless Internet Explorer is opened as administrator, the camera functions of Live Web Viewer will not work (screen capture, etc.).

2. Enter the IP address or host name of the network camera in the Address field of user browser. Double-click the searched IP address on IP Cam Search to connect to the web.
3. Page will be displayed. Enter the user ID and password.
 - Default User ID: admin
 - Default User Password: admin



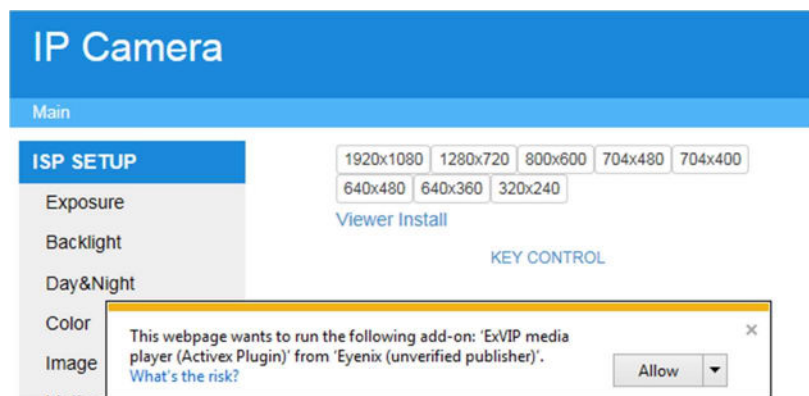
4. Click "Install" to install the Web Viewer. Run the axvlc.cab installation file.



ACCESSING THE NETWORK CAMERA

1. Start your browser
When you run or install ActiveX, open the Internet Explorer browser as

- Click the warning message and select "Install ActiveX Control..."



- The video image displays in user browser.

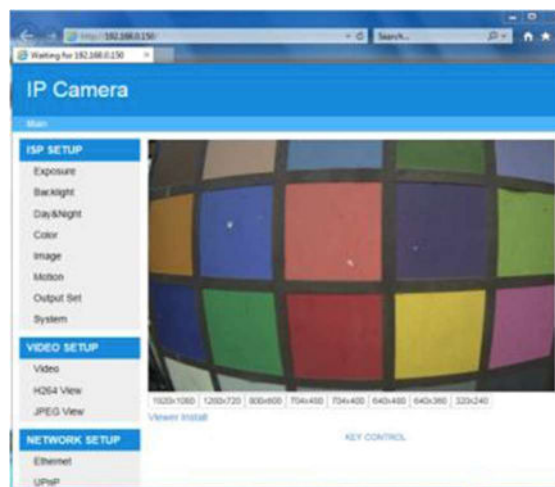
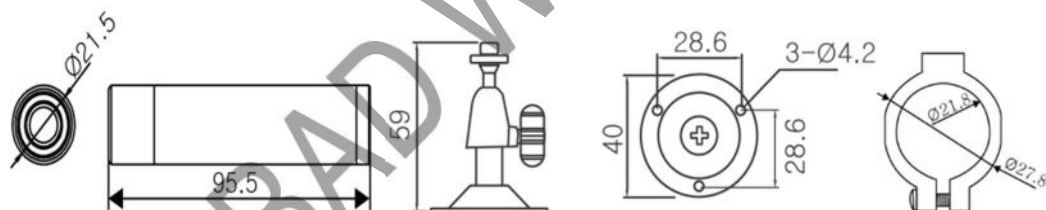


Image	Image Sensor	1/2.8" SONY 2.13M STARVIS CMOS
	Size	1/2.8 inch
	Scan Method	Progressive Scan
	Total Pixels	1945(H) x 1109(V), 2.16 Mega Pixels
	Effective Pixels	1945(H) x 1097(V), 2.13 Mega Pixels
Image Settings Brightness, Contrast, Saturation, Sharpness, White Balance, Motion Detection, Exposure Control, Rotation of Images, Privacy Mask (15 Zones), BLC, AGC, WDR, 3DNR, Sens-up		
Lens	Focal Length	Board Lens, 3.6mm, 4mm, 6mm, 8mm, 12mm
	F.O. V	H92° x V49° x D110°
Minimum Illumination 0.05Lux / Sen-up: 0.005 Lux		
Network	Interface	RJ45 10/100 Base-T PoE
	Protocol	TCP/IP, UDP/IP, DHCP, AUTO IP, JGMP, ICMP, HTTP, UPnP, FTP, SMTP, SNTP, DNX, RTSP, RTMP
	Video Codec	H.264 Main Profile Motion JPEG
	Resolutions (H.264/MJPEG)	H.264: MAX 1920x1080@30fps, MJPEG: MAX 1280x720@30fps
	Video Streaming	3 Channel Stream at different frame rate and bandwidth
MicroSD	Onvif	gSOAP, profile S:spec 2.4
	Micro SD / SDHC	Max. 128 GB (Built-in Card Slot)
General	Power	PoE Class 3 (IEEE 802.3af), 12VDC max. 130 mA
	Operating Conditions	Temperature: -20°C ~ +50°C, humidity MAX. 80% RH (non-condensing)
	Storage Conditions	Temperature 30°C ~ +60°C, Humidity MAX. 90% (non-condensing)

6. Dimensions

Unit: MM



7. Product Specifications



BAD WOLF
TECHNOLOGIES

Bad Wolf Technologies, LLC.

10602 N Port Washington Road, Suite 201 | Mequon, WI 53092, USA
+1 414 639 9085 | www.badwolftech.com | sales@badwolftech.com
Certified WOB | NAICS 334310 | CAGE 6XSP8 | UEI RCRGZKP6QBH1